

The SSF-4RU-E12 is a 4RU fiber distribution panel that can accept up to 12 SSF™ Adapter Plates. The enclosure includes a slide out master panel that allows for easy access of terminations, fiber management and splicing. The unit includes both recessed and flush mount rack ears.

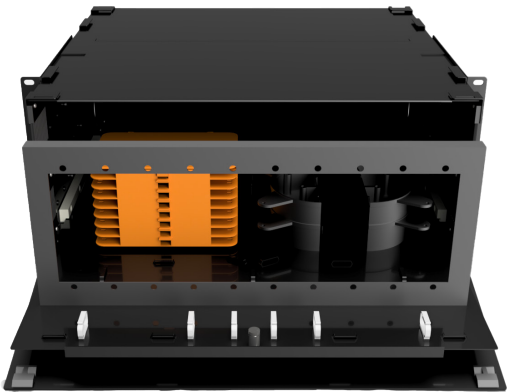
FEATURES AND BENEFITS

- Up to 12 adapter plates or MTP modules
- Includes 2 flush mount and 2 recessed 19" rack mount ears
- 19 or 23" rack mountable
- Direct termination or fusion splice pigtails
- Slide out master tray, front or rear
- Fanout kit securing points
- Multiple tie down points for buffer tubes and cable management
- LGX compatible adapter plates or MTP modules

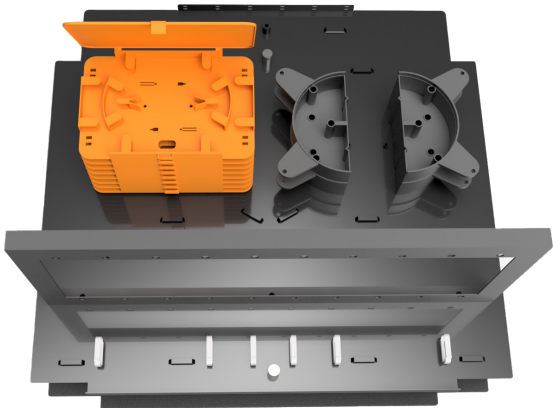
APPLICATIONS

- Telecom Closets, data centers, and remote distribution terminals

SPECIFICATIONS	
Adapter Plates	12
Splice Trays	6
Protrusion	4.25"
Dimensions	6.948" H x 17.0" W x 14.1" D in
Packaging	10" H x 20" W x 17" D in
Weight	12 lbs empty, 15 lbs typical loaded
Material	0.06" Aluminum, Black powder coat
Compatible with	SSF™ adapter plates



Enclosures are sold empty, front view.



Enclosures are sold empty, top view.

PART NUMBER	DESCRIPTION
SSF-4RU-E12	4RU Enclosure, Empty, Holds up to 12 plates, comes w/ Flush Mount Rack Ears